



the warhol:

the andy warhol museum - pittsburgh, pa

“the best thing about a picture

is that it never changes,

even when the people in it do.”

-andy warhol

table of contents:

- 1 about the museum
- 2 the carnegie museums of pittsburgh
- 3 about the art collections
- 4 get involved
- 5 facility rentals
- 6 board of directors
- 7 visiting hours & admission
- 8 special offers & discounts
- 9 accessibility
- 10 calendar of events
- 11 exhibitions
- 12 youth programs
- 13 studio
- 14 school & teacher
- 15 the store
- 16 the store





the carnegie museums:

The Andy Warhol Museum is one of the four Carnegie Museums of Pittsburgh, and a collaborative project between the Carnegie Institute, the Dia Art Foundation, and the Andy Warhol Foundation for the Visual Arts. Plans to house The Warhol in Pittsburgh, Warhol's birthplace, were announced in 1989, and the museum opened its doors in May 1994. Originally built in 1911 as a distribution center for products sold to mills,

The Warhol was designed by architect Richard Gluckman and features seven floors of gallery and exhibition space.

Founded by Andrew Carnegie in 1895, Carnegie Museums of Pittsburgh is a collection of four distinctive museums dedicated to exploration through art and science: Carnegie Museum of Art, Carnegie Museum of Natural History, Carnegie Science Center, and The Warhol.

about the museum:

The Andy Warhol Museum is a vital forum in which diverse audiences of artists, scholars, and the general public are galvanized through creative interaction with the art and life of Andy Warhol.





about the art collections:

The collection includes nine hundred paintings; approximately one hundred sculptures; nearly two thousand works on paper; more than one thousand published and unique prints; and four thousand photographs. The collection also features wallpaper and books by Warhol, covering the entire range of his work from all periods, and includes student work from the 1940s, 1950s drawings, commercial illustrations and sketchbooks; 1960s Pop paintings of consumer products (Campbell's Soup Cans), celebrities (Liz, Jackie, Marilyn, Elvis), Disasters and Electric Chairs; portrait paintings (Mao), Skull paintings and the abstract Oxidations from the 1970s; and works from the 1980s such as The Last Supper, Raphael I-6.99 and collaborative paintings made with younger artists such as Jean-Michel Basquiat and Francesco Clemente. Drawings by Warhol's mother Julie Warhola are also included in the art collection.

get involved:

Donate

The Carnegie Museums of Pittsburgh offers multiple donation packages, as well as employee match programs and commemorative donation gifts.

Member

Become a member and open the door to endless opportunities for learning and adventure. Choose between the Premium, Family, Dual, Individual, and Senior memberships offered. Each membership includes great benefits such as: unlimited general admission, free admission, discounts, special invites, and a subscription to the Carnegie Magazine. Learn more at carnegiemuseums.org > Membership.

Career

Learn more about employment opportunities at The Andy Warhol Museum and Carnegie Museums of Pittsburgh, and to see currently open roles at carnegiemuseums.org > About Us > Employment.

Volunteer

When you volunteer with The Warhol, you expand your horizons, meet interesting people and surround yourself with some of the coolest contemporary art anywhere. Volunteer opportunities exist for teens, college students and adults of all ages, and are constantly changing based on the needs of the museum.



facility rentals:

The Andy Warhol Museum, one of the four Carnegie Museums of Pittsburgh, offers a magnificent venue for private and corporate functions. Plan an event in an intriguing and distinctive space, and mingle with the celebrities on view at The Warhol.

Facility Capacity: 100 seated, 400 cocktails

The special events staff can help you create an event that is unique, memorable, and surprisingly affordable. Whether you are planning an informal dinner for 20, a black tie banquet for 100, or a reception for 300, arrangements can be made for everything from the menu to gallery tours. You can also host business meetings, lectures or symposiums in the museum's state-of-the-art film and video theater.



Special Event Rates

First Floor	\$3,500
Floors 1-4	\$4,500
Floors 1-7	\$5,500

For more information on facility rentals, please contact:

Kristen Chrisholm
412.237.8387
chrisholmk@warhol.org

board of directors:



**Pictured above:
Director,
Eric Shiner**

The Board of Directors of The Andy Warhol Museum is composed of esteemed professionals in the local, regional and national community who lend their expertise to the continued growth and success of The Warhol. The Board's function is to advise the director, to raise funds to support major museum initiatives and exhibitions, and to recruit new board members from around the country to support the museum's mission.

Chair

Michael Fabrizi

Doris Carson Williams

Emeriti

Milton Fine

Vincent P. Fremont

Juliet Lea H. Simonds

Board

Ralph Goetz

Gail Hashimoto

Maureen B. Kerr

Ann M. McGuinn

Jacqueline C. Morby

Kathleen Patrinos

Donna Peterman

Susan Baker Shipley

Dmitri D. Shiry

Judith Evans Thomas

Jamee W. Todd

Larry Wasser

Ex Officio

William E. Hunt

Jo Ellen Parker

Eric Shiner

Joel Wachs

Visit www.warhol.org/museum/board for the Director's Winter 2016 Statement!



admission:

Admission includes all permanent and special exhibitions, daily film + video screenings, daily gallery talks, and The Factory.

- Members of the Carnegie Museums of Pittsburgh**Free
- Adults** \$20
- Students (with valid ID)** \$10
- Children (3-18)** \$10
- Fridays (5pm - 10pm)** Half-price

visiting hours:

Monday	closed
Tuesday	10am - 5pm
Wednesday	10am - 5pm
Thursday	10am - 5pm
Friday	10am - 10pm
Saturday	10am - 5pm
Sunday	10am - 5pm

The Warhol is closed on New Year's Day, Easter Sunday, Memorial Day, Independence Day, Labor Day, Thanksgiving, and Christmas Day.

The Warhol Café and Store are open during most museum hours and is accessible without museum admission.



special discounts:

AAA Members

Present Membership card to receive \$1 off admission for up to six people.

ACCESS/EBT Card

Present your ACCESS/EBT Card and receive admission for up to four people at \$1 each. Not valid with any other offers or group rates. Visitors must present ACCESS/EBT Card, along with a photo ID to receive the discount. The program is supported by BNY Mellon.

Active Military Personnel

Military personnel receive 50% off. Offer valid for up to four people per military ID.

Free Student Admission with Valid ID (only for universities listed below) These offers apply to individual students only.

Classes or other student groups of 10 or more seeking group discounts must pre-register a Group Visit.

- Carnegie Mellon University
- Chatham University
- Duquesne University
- Point Park University
- University of Pittsburgh
- Reciprocal Members

Visit the Membership site for a list of reciprocal museums. Members of other museums: please check with your institution for a list of your reciprocal museums.

WQED Members

Present your Membership card to receive a buy one, get one free admission of equal or lesser value.

accessibility:



Sign

Tours conducted in American Sign Language are available upon request. Please call two weeks in advance to schedule a tour.

Wheelchair

A wheelchair accessible entrance to the Museum is located at 117 Sandusky Street. Please call 412.237.8300 in advance with date and time of arrival.

Vision

For blind or visually impaired visitors, educators are trained to be sighted guides and provide detailed descriptions of artwork on gallery tours. Touchable objects are included when available. We welcome service dogs.

Large Print

Large print wall labels and panel text are available at the front desk. Additionally, guests can download PDFs from home and load on to their own devices before their visit.

Accessible elevators are located on the first floor of the Museum. All floors, including the studio, café and gallery levels, are accessible for people with mobility impairments. Restrooms are located on the Underground (basement) floor and the second floor. All restrooms include accessible facilities.

Standard wheelchairs are available on a limited basis please reserve more than 24 hours in advance.

June						
					3	4
					17	

July						
					8	9

August						
	14					
	28					

calendar:

June

- Saturday, 3rd (2pm) - Beginning of Film Screening: Ai Weiwei: Never Sorry
- Sunday, 4th (8pm) - Film Screening: Blue Kite
- Friday, 17th (7pm) - In Discussion: Alison Klayman: Director & Producer of Ai Weiwei: Never Sorry

July

- Friday, 8th (7pm) - Sensory-Friendly event for Adults (21+)
- Saturday, 9th (10am) - Sensory-Friendly event for Teens and Young Adults
- Saturday, 9th (2pm) - Rox Performance Academy Concert

August

- Sunday, 14th - End of Exposures: Zhiwan Cheung: Hanging Fruit
- Sunday, 28th - End of Andy Warhol | Ai Weiwei Exhibition

**Please contact:
Eli Kochersperger
at 412.237.8326
to schedule a
special tour.**

exhibitions: current & upcoming

Michael Chow: Voice for My Father February 13 – May 8, 2016

The exhibition features three main bodies of work, which include new paintings completed expressly for The Warhol show, vintage photographs of the artist's father Zhou Xinfang—a grand master of the Beijing Opera—and a collection of portraits of Chow painted by his contemporaries, such as Andy Warhol, Jean-Michel Basquiat, and Ed Ruscha.



Andy Warhol | Ai Weiwei June 4 – August 28, 2016

Andy Warhol / Ai Weiwei, developed by The Warhol and the National Gallery of Victoria, with the participation of Ai Weiwei, explores the significant influence of these two artists on modern and contemporary life, focusing on the parallels, intersections, and points of difference between their practices—Warhol representing 20th-century modernity and the “American century,” and Ai representing life in the 21st century and what has been called the “Chinese century” to come.



youth programs:

Youth programs at The Andy Warhol Museum focus on working with small groups of young people to foster leadership with creative skills and to offer relevant programming to a teen audience. Warhol's work provides a unique and engaging model for youth that maintains a relevant link to the emerging present. Young people continue to be interested in and influenced by the unique scene he created, his experimentation

with diverse media and disciplines, and his manipulations of pop culture—all vital models of creativity.

Some youth programs include:

- Youth Invasion - May 13 (5-9pm)
- RUST
- Power Up

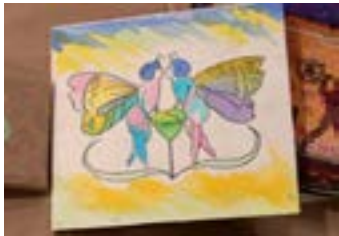


Find out more at: warhol.org/education/youth

studio:

Art Making Activities in the Factory

The Factory is run by Artist Educators from various backgrounds in fine arts, art education, and art history. These artists and educators have unique perspectives on Warhol and an extensive understanding of his art and life. Feel free to ask them questions about the museum! Come to the Factory and try out some signature Warhol art making techniques like blotted line drawing, acetate collage, and silkscreen printing. All ages are welcome.



Blotted Line Drawing

The blotted line technique is a simple print making process. The process resulted in the dotted, broken and delicate lines that were characteristic of Warhol's illustrations.



Silkscreen Printing

Choose from a selection of images and colorful ink and learn how to silkscreen print on paper, t-shirts, or tote bags.



Product Design

This layering technique is fun for all ages. Experiment with colorful paper, stencil, and a product template to create your ultimate product.



school and teacher:

School Programs emphasize interdisciplinary education and the role of art and artists in education. Programs, are developed by Artist Educators who are both practicing artists and educators.

School Group Tours

One-hour tours include an introduction to the art and life of Andy Warhol together with a focused discussion on specific themes and related social and cultural issues!

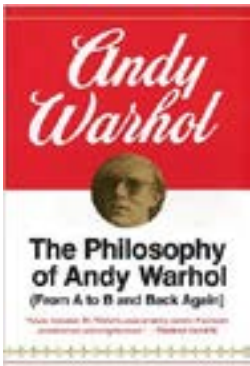
Teacher Workshops - Earn Act 48 Credit

Teacher Workshops focus on ways to use contemporary art in your classroom while meeting state and national learning standards. Workshops topics include: color theory, aesthetics, collaboration, creativity and silkscreen printmaking and more.

*Join our Teachers Only Loyalty Program to receive free and exclusive benefits, including a year of free admission.

the store:

Books



The Philosophy of Andy Warhol (From A to B and Back Again)

In fifteen witty chapters, Andy discusses his philosophies on work, success, fame, love, marriage, and beauty.

\$14.00
Member Price:
\$12.60



Halston & Warhol: Silver & Suede Book

Halston and Warhol illuminate through their art and fashion.

\$50.00
Member Price:
\$45.00

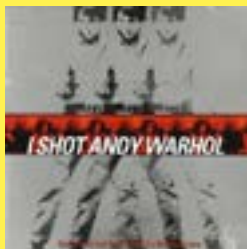
Calendars



The Art of Andy Warhol 2016 Wall Calendar

\$14.99
Member Price:
\$13.49

CDs & DVDs



I Shot Andy Warhol (Soundtrack) CD

The soundtrack from the 1996 acclaimed film of the same title.

\$19.95
Member Price:
\$15.28

Puzzles



Flowers Puzzle

This 1,000 piece puzzle features images of six screen prints in vibrant colors.

\$16.00
Member Price:
\$14.40

Home Decor



Marilyn Monroe Mug Set

Includes 4 mugs in a giftbox, dishwasher and microwave safe

\$105.00
Member Price:
\$94.50



Cow Journal Layered

Celebrating the iconic pop art of Warhol, this colorful journal is twice the fun!

\$11.99
Member Price:
\$10.79

Posters



I Think Everybody Should Like Everybody

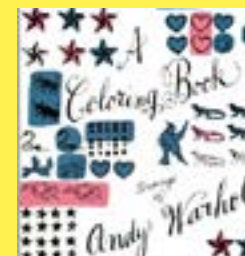
Prices vary by size



Colored Campbell's Soup Can, 1965 (red & green)

Prices vary by size

Children's



Drawings by Andy Warhol Coloring Book

\$19.95
Member Price:
\$17.96

fun facts:

- It's the largest museum dedicated to a single artist in the united states.
- The museum features the handiwork of warhol's mother, Julia Warhola.
- You can meet warhol's stuffed great dane, cecil.
- Warhol was a hoarder and the museum has 608 time capsules as proof.

